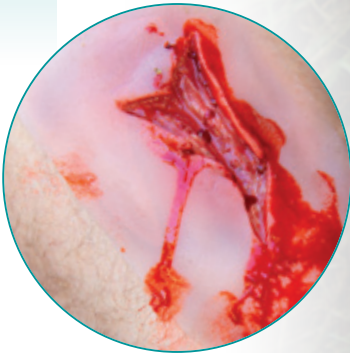




Wound moulage

for realistic emergency training



*Medical Education
since 1950*

ERLER ZIMMER

Wound moulage

for realistic emergency training

NEW
PRODUCT

This new series of extremely realistic moulages show typical injuries. The injuries are already painted. For an even more realistic look artificial blood can be added. Instead of time consuming Make-up the moulages will be immediately ready for use. Use your valuable time for training, not for Make-Up.



All wounds are delivered in transport boxes. Manufactured in Germany.



The wounds adhere independently
✓ on skin
✓ on dolls,
but can be used for improved liability
(e.g. in scenarios with a lot of movement)
with skin-glue.

Wound moulage bullet wound, arm

Ref.no. NW104

with bleeding function



Wound moulage bullet entrance hole

Ref.no. NW010a



Wound moulage bullet hole, leg

Ref.no. NW105

with bleeding function



Wound moulage bullet exit hole

Ref.no. NW010b





Wound moulage open fracture, leg

Ref.no. NW103

 with bleeding function



Open fracture leg

Wound moulage open fracture, arm

Ref.no. NW102

 with bleeding function



Wound moulage „open fracture“

Ref.no. NW004



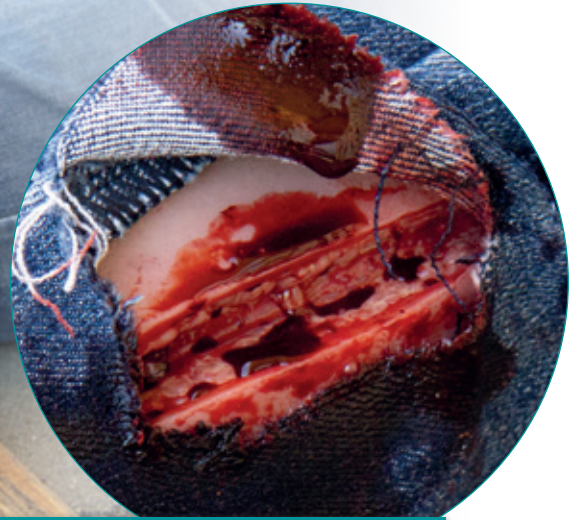
Bleeding Function

The large wounds have a bleeding function. An incorporated, invisible tube allows the wound to bleed realistically. The tube is connected to an infusion bag which could be filled with artificial blood. Thus the mime himself, or a third person bleed the wound.

Made in  Germany



Wound moulage
„cut“



Wound moulage „cut“

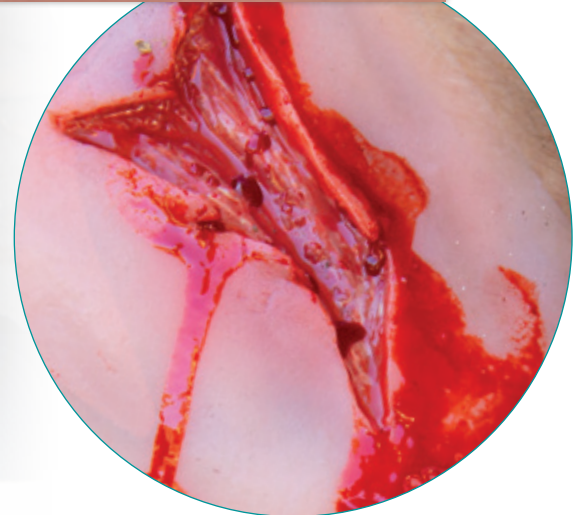
Ref.no. NW002



Wound moulage
„laceration“

Wound moulage „laceration“

Ref.no. NW003



Made in  Germany

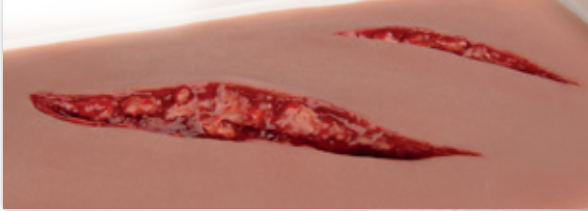
*Wound moulage
cut, with bleeding
function*



Wound moulage cut, large

Ref.no. NW100

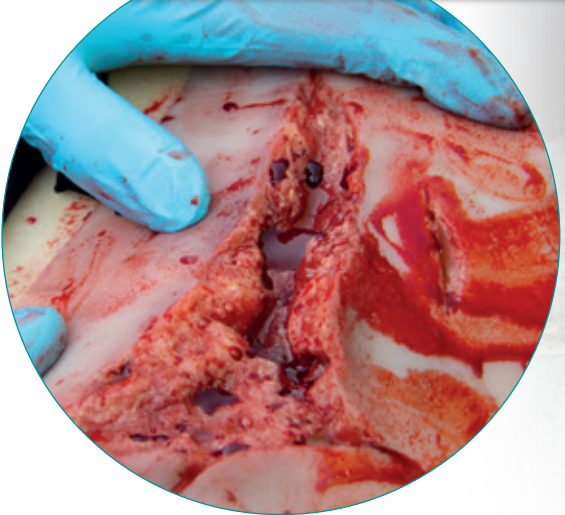
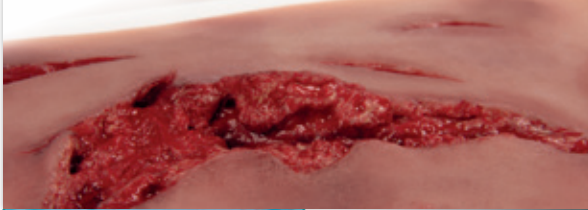
 with bleeding function



Wound moulage laceration, large

Ref.no. NW101

 with bleeding function

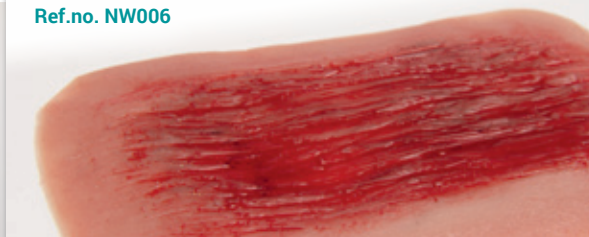


*Wound moulage
laceration, with
bleeding function*



Wound moulage „abrasion“

Ref.no. NW006



Wound moulage „cut with glass fragment“

Ref.no. NW001



Wound moulage cut broken bottle

Ref.no. NW009



Wound moulage „human bite“

Ref.no. NW005





Wound moulage scalding



Wound moulage scalding

Ref.no. NW011



Wound moulage scalding

Ref.no. NW108



Wound moulage 2nd degree burn

Ref.no. NW007



Wound moulage 3rd degree burn

Ref.no. NW008



Wound moulage 2nd degree burn

Ref.no. NW106



Wound moulage 3rd degree burn

Ref.no. NW107



Use your valuable time for training, not for Make-Up. Affix the moulage and start the training immediately

Wound moulage protruding of large intestines

Ref.no. NW109



Wound moulage protruding small intestines

Ref.no. NW111



Wound moulage
for realistic
emergency training.

All wounds
are delivered
in transport boxes.

Recommended accessories

Artificial blood
250 ml bottle.
Ref.no. 7024

Artificial Glass
for splinter
simulation.
Ref.no. NW200

Skin Glue
25 g Tube.
Ref.no. 7700



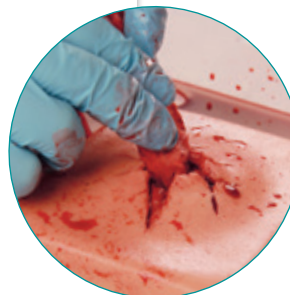
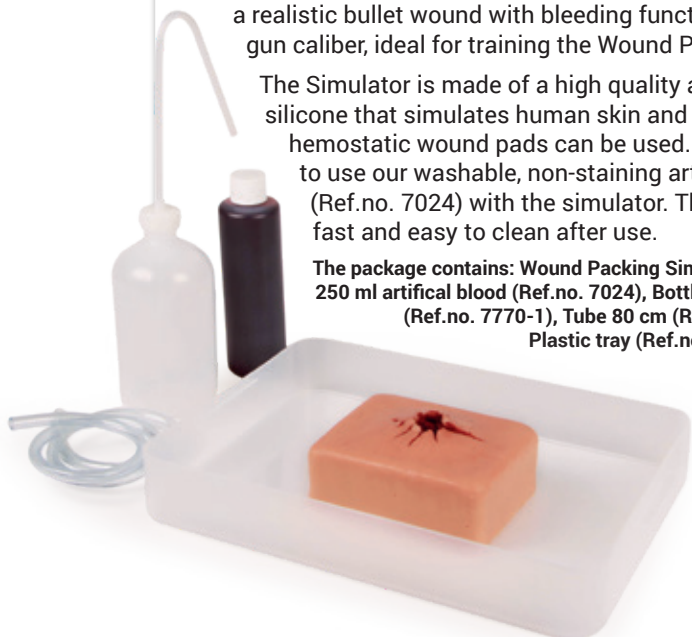
Wound Packing Trainer

This affordable and realistic Wound Packing Simulator is ideal for emergency training and the simulation patient program. Shown is a realistic bullet wound with bleeding function caused by a large gun caliber, ideal for training the Wound Packing procedure.

The Simulator is made of a high quality and very durable silicone that simulates human skin and tissue. Common hemostatic wound pads can be used. We recommend to use our washable, non-staining artificial blood (Ref.no. 7024) with the simulator. The trainer is fast and easy to clean after use.

The package contains: Wound Packing Simulator (Ref.no. 7770), 250 ml artificial blood (Ref.no. 7024), Bottle for fake blood (Ref.no. 7770-1), Tube 80 cm (Ref.no. 7770-2), Plastic tray (Ref.no. 7770-3), Weight: 1kg.

Ref.no. 7770

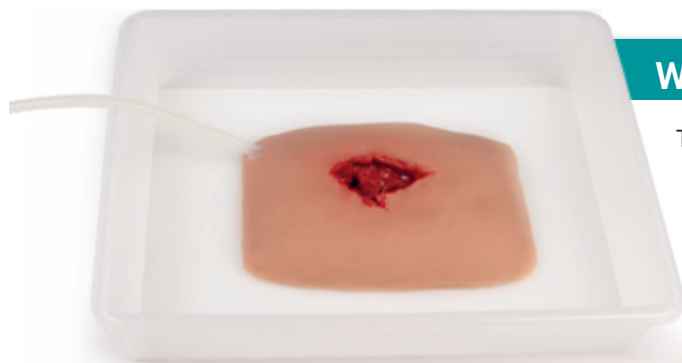


Wound moulage wound packing

This moulage shows a large wound with severe bleeding for training of wound packing. With line for bleeding function. The moulage adheres to skin or a manikin. For longer training or improved adherence an optional glue is available.

Supplied with storage box.

Ref.no. NW110



Erler-Zimmer GmbH & Co. KG
Hauptstraße 27 · D-77886 Lauf
Tel.: (+49) 07841 / 6003-0
info@erler-zimmer.de

www.erler-zimmer.de

Anatomical Models
Medical Simulators
X-Ray Phantoms
3D Printed Anatomy Series
Veterinary
Anatomical Charts
Pharma advertising materials

Follow us!

